



Stop storefront crashes!

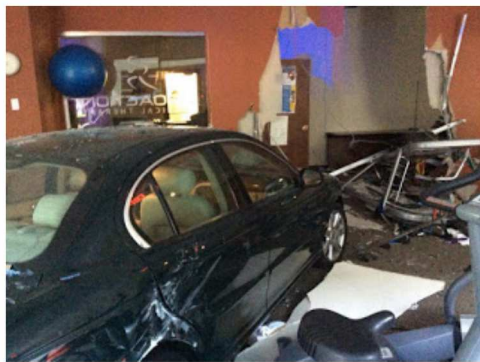
It happened to me. It can happen to you. It's time to prevent vehicle-into-building crashes.

[Home](#)
[About / Contact / FAQs](#)
[Privacy, Etc.](#)
[Crash Victim?](#)

August 5, 2015

Easy Lessons

Editor's Note: This post is co-published on the Storefront Safety Council blog.



Car crashed into office, Parklawn Drive, Rockville, Md.
(Source: Montgomery County Fire Dept., May 2015)

It's so easy to think we'll be coming back when we walk out the door in the morning, isn't it? As we grab our keys and turn that lock, we say to ourselves, "Oh, I'll do that later," or "I'll make that phone call when I get home tonight."

That's what I thought, too, when I left to start what I assumed would be a normal day in August 2008. Little did I know that just a few hours later, I'd get hit by a car as it crashed through the doors of my favorite nearby

7-Eleven. I didn't come through my own front door again until many weeks later, after spending time in two hospitals and two nursing homes.

It would be nice now, seven years later, to just chalk that experience up to a life-lesson learned or a weird fluke that just a few of us experience. But when I heard in the news about a car that crashed into a building recently just down the street from where I once worked, I was reminded that this problem is not a rare fluke. In fact, it's all too common.

This particular incident wasn't very different from those you can read about throughout the pages here of storefrontcrashes.com or on storefrontsafety.org: "An elderly woman smashed her car through a Rockville, Maryland, parking garage and into a physical therapy office," according to one of the [TV news reports](#).

Unfortunately, she injured herself as well as others, particularly a receptionist at the PT office — sitting at her desk doing her work like any other seemingly normal day — who was pinned under a desk and debris by the crash.

Two things grabbed my attention about this incident.

First, on a personal level, it was right in my old stomping grounds, maybe a hundred yards from my former office. So, do I feel like these crashes are hitting pretty close to home? Yeah. Going through it once was one time too many — no need for a repeat.

Second, and more importantly, the fire department public information officer made a seldom-voiced observation to the news media while he was on scene.



(Source: Montgomery County Fire Dept., May 2015)

RECEIVE FREE UPDATES

Enter your email address here:

Subscribe

Delivered by [FeedBurner](#)
(Your address never sold.)

HOW THIS AFFECTS YOU

Vehicles crash into restaurants, stores, salons and other types of businesses [all the time](#), often injuring and sometimes killing customers and employees. I discovered this the hard way [when I got hit](#) in 2008.

—Mark Wright

QUICK TIPS

- **Business:** You and your landlord can protect your employees and customers with proper barriers and other strategies.
- **Shopper:** Look before you exit. Keep your eye on moving vehicles, especially as they pull in to park.
- **Driver:** Pay attention. Focus on correct pedal use. Confusing brake & gas pedals is a common cause of storefront crashes.

STOREFRONT CRASH NEWSFEED

[Truck Crashes Into Nostrand Avenue](#)

Sheepshead Bites

The driver of a truck that smashed into a vacant storefront on Nostrand Avenue Sunday evening said he swerved to avoid a bicyclist and lost control of his vehicle. "The guy just shot across and I tried to avoid him and the car went out of control ...

[drunk driver crash ends up in church](#)

Bay News 9

According to Tampa police, 44-year-old Bruce Powers was driving drunk on southbound Florida Avenue when he crossed the center line, crashing into a car in the opposite lanes, pushing that car and his own into the front of the church, which is along the ...

[Car slams into Manchester storefront](#)

WMUR Manchester

He said he went to help the driver of the car in the store, but was unable to reach her. "The car was too far in the store," said Blais. Fortunately, he said he could hear her calling

He said, "There's not much of a barrier," as he looked at the vehicle's path. "There's a parking space, a little cement, the sidewalk, a grassy area and then the building. It didn't take much effort to get in there."

If by some miracle you, dear reader, happen to be a commercial property owner or an architect, please...read his remarks again. Very little stood between a moving vehicle and an innocent receptionist on the other side of a glass window.



(Source: Montgomery County Fire Dept., May 2015)

I'll refrain from getting preachy here. Suffice it to say that one of the common elements in most vehicle-into-building crashes (especially those that lead to injuries or deaths) is the lack of any sufficient barrier to protect pedestrians and building occupants from an out-of-control car.

Putting bollards or other appropriate standards-based barriers between people, buildings, and parking spaces is

easy. Almost as easy as walking out the door in the morning thinking we'll be coming back later.

Learn more at the Storefront Safety Council website.

Labels: [Bollards](#), [Crashes](#), [Pedal confusion](#), [Perspective](#) by Mark Wright 

No comments:

Post a Comment

Thanks for your comment.

Enter your comment...

Comment as:

Notify me

[Home](#)


[Older Post](#)

Subscribe to: [Post Comments \(Atom\)](#)

out that she was fine. Turcotte, meanwhile, said the accident has ...

[SUV crashes into Dunkin' Donuts storefront in NorthJersey.com](#)

GLEN ROCK — A 16-year-old student driver accidentally hit the accelerator of his family's Volkswagen SUV, crashing into the front of a Dunkin' Donuts shop in Glen Rock on Sunday around lunchtime, according to police Sgt. Dean Ackermann.

powered by 

[Best Practices](#) | [Crash Examples](#)

ARTICLE: [Preventing a Pain in the Glass](#)



[Comprehensive primer on storefront crash issues and solutions \(PDF\)](#)

CONNECT & SHARE


[FOLLOW ME ON twitter](#)


[my LinkedIn profile](#)


[STOREFRONT SAFETY COUNCIL](#)
[Virtual Think Tank on LinkedIn](#)

[Share](#) |

HELPFUL LINKS & RESOURCES


 [AAA Foundation for Traffic Safety | Saving lives through research and education](#)

 [Amputee Mommy Blog](#)
We Need Your Help! - My friend Dave and I are trying to be rallying the community, hoping to gain more momentum in the fight against these horrific proposals. After a lengthy ...
3 hours ago


 [Bollards: Blockaides](#)
L.A. Café Crash Serves as Sobering Reminder of Poor Parklet Design - The post L.A. Café Crash Serves as Sobering Reminder of Poor Parklet Design appeared first on Blockaides, Inc. - Bollards and Other Safety Products.
1 year ago

 [Bollards: Calpipe](#)

[Bollards: MaxiForce](#)

 [Education for the Driving Masses | Facebook](#)

 [ICSC: International Council of Shopping Centers](#)

 [Ideal Shield | The Bollard Cover, Handrail, and Guardrail Company](#)
test - safdsgrfdsgdsdgsdGegRG The post test appeared first on Ideal Shield.
1 year ago

[Keeping Us Safe | Solutions for older drivers & their families](#)

[Lawyer Referral Directory - ABA](#)

[Mobility Lab](#)

[Planning Tool Brings Hope for Transit Users](#) - Paul Supawanich and his colleagues want to make transit better. They see transit as a powerful force for good because it is efficient at moving lots of peo...
19 hours ago

[NACS - The Association for Convenience & Fuel Retailing | NACS Online](#)


[National Parking Association](#)


 [OpenPlans](#)
[OpenBlock powers neighborhood news for the Columbia Daily Tribune](#) - Congratulations to the Columbia Daily Tribune for their new Neighborhoods section, built on OpenBlock. Their community of readers have a powerful new way to...
1 year ago

 [Parking Today](#)

[Steve Moll - Vehicle vs Building](#)

[Streetsblog New York City Today's Headlines](#) - More on Citi Bike Expansion: WCBS, WABC, WNBC, Politico, AMNY, DNA, Q Chron, News Bronx BP Diaz Thinks Jersey City Expansion Is What Kept Bike-Share From t...
2 hours ago

 [The Bollard | Whole Building Design Guide](#)

 [The Bollard: Crash- and Attack-Resistant Models | Whole Building Design Guide](#)

[The Parking Matters® Blog](#)
[Is it Really a Garage?](#) by David Hill - Today, I am thinking about my garage. It is a quite a nice garage: It's a double-car, concrete slab, heated, insulated facility. There is a nice shingle ro...
2 hours ago

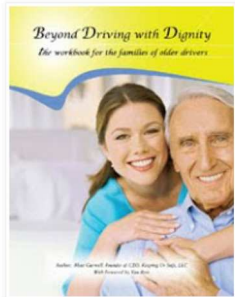
[UK: Bollards of London](#)
[The Serpentine & Marrakesh...](#) - Bollard with Seagull... Welcome to London's Hyde Park where I regularly march/jog/run around on Sundays or the occasional week day. I recently came across ...
1 year ago

[ULI Washington Blog](#)

[Career Trajectory 101 Event Recap](#) -
[image: CT101.1]In a highly interactive
exclamation point to Real Estate 101's
2015 event series, Studio Theater was
host to "Career Trajectory 101," in ...
4 weeks ago

[Urban Land Institute](#)

Senior Driver in Your Family?



Beyond Driving with Dignity can
make the conversation easier.

Search This Blog

Blog Archive

Blog Archive

Subscribe via reader

Posts

Comments

Follow via Google

Join this site

with Google Friend Connect

Members (7)



Already a member? [Sign in](#)